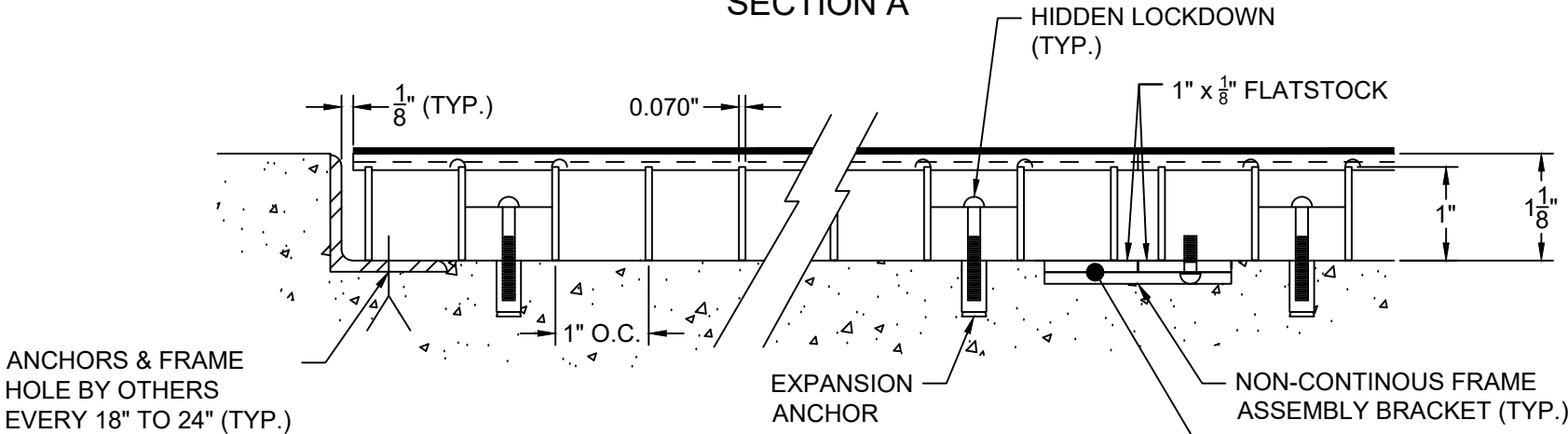
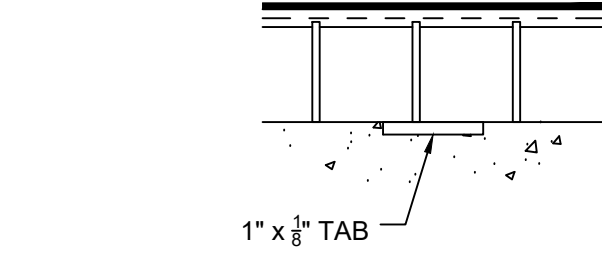


SECTION A

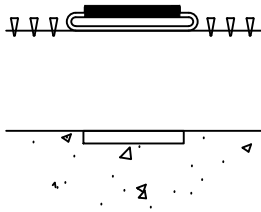


SECTION B

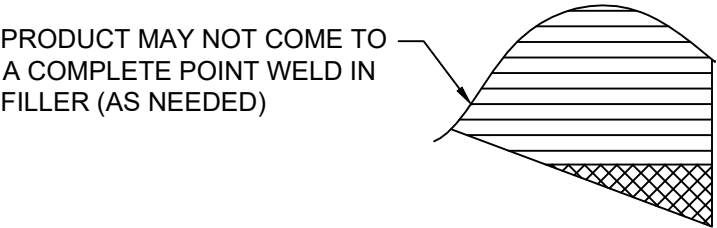
SECTION F



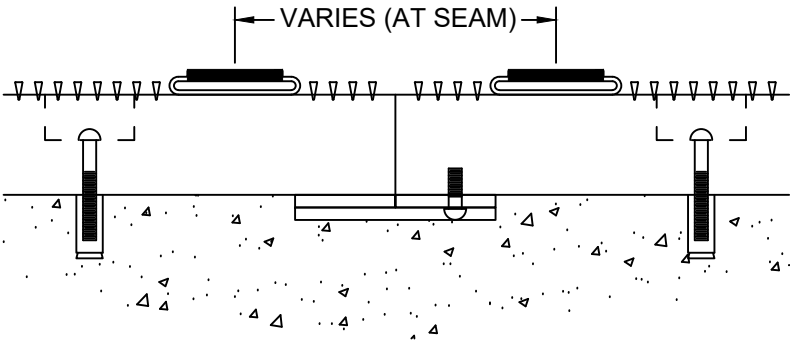
SECTION C



SECTION D



DETAIL X



SECTION E



8333 BOYLE PARKWAY, TWINSBURG, OHIO 44087
TEL (800) 321-3827

ENGINEERING

10/28/2025
KADEE INDUSTRIES

PROJECT :
XXXXX

JOB NO : XXXXX

SHEET X OF X

SCALE : N.T.S.

DATE : XX/XX/XX

DRAWN BY : XX/XXX

REV : X

Revisions Record

REV	DATE	BY	Ckd	DESCRIPTION
-	-	-	-	-

NOTE : DO NOT SCALE DRAWING. ENTEC-98 7/14/25

MODEL :
ENTEC-98 SS GRATING W/
CARPET INSERTS, HIDDEN
LOCKING DEVICES, SS ANGLE
FRAME - LEVEL BED - ABO

GENERAL SPECIFICATIONS : ENTEC-98

MAT INSERT :

NYLON CARPET : 100% NYLON 6, FUSION BONDED TO
POLYPROPYLENE BACKING.

HEAVY DUTY CARPET : 100% POLYPROPYLENE FIBERS
(80/20 BLEND OF 600/12 DENIER MULTIFILAMENT AND
595 DENIER MONOFILAMENT) FUSION BONDED TO
POLYPROPYLENE BACKING

TREAD MATERIAL : TYPE 304 SS WIRE #4 SATIN FINISH

SUPPORT RODS : 0.070" x 1" SPACED 1" O.C.

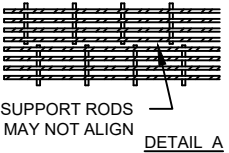
SLOT OPENINGS : 0.125"
EACH JUNCTURE OF SURFACE WIRES TO SUPPORT RODS SHALL
HAVE WELDED JOINTS

SPECIAL NOTES :
* GC/INSTALLER IS RESPONSIBLE FOR COPLANAR INSTALLATION
OF MAT SURFACE TO SURROUNDING FLOOR CONDITIONS.

INSERT TRACK : TYPE 304 SS 1 3/8" CHANNEL SPACED 4.12" O.C.

NOTE :
FRAME FINISH : MILL

CARPET COLOR :



HIDDEN LOCKDOWNS ARE LOCATED AT STARS (*S) ON GRATING. USE ALL LOCKDOWNS PROVIDED. SEAMS IN GRATING MAY NOT ALIGN WITH SEAMS IN FRAMING IN ALL CASES.