

# KDCP & KDVP

## ARC CLEAN TREAD™

Aluminum Grid with Carpet or Vinyl Inserts

PRACTICAL & ECONOMIC ALUMINUM ENTRANCE GRID SYSTEMS

### APPLICATIONS

#### ENTRANCE GRIDS:

LEVEL BED OR PIT

### SPECIFICATIONS

#### Section 12-48-23 Entrance Floor Grids

Furnish and install Arc Clean Tread™ Model KDCP or KDVP Entrance Floor Grids as manufactured by KADEE Industries in Twinsburg, Ohio  
Phone: (800) 321-3827

#### Construction:

- **Tread Rails:** Manufactured from 6063-T6 aluminum with tread rails spaced 1-1/2" on center with 2" drainage slots spaced 6" on center. Tread rail sections sit on vinyl cushions.
- **Framing:** 6063-T6 Extruded aluminum. Custom pit liners are available in aluminum for drainage and evaporation applications.
- **Finishes:** Standard-mill; Anodized finishes available upon request.

#### Carpet:

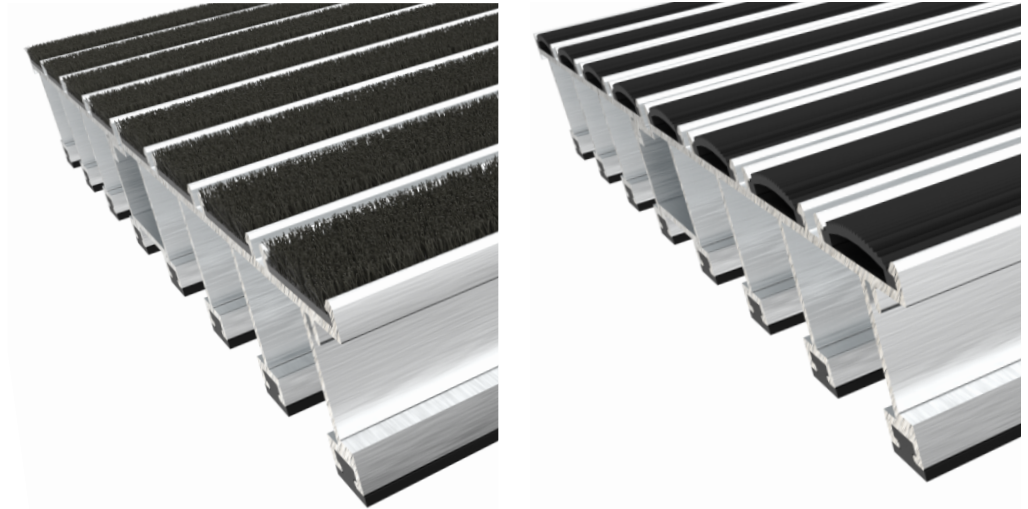
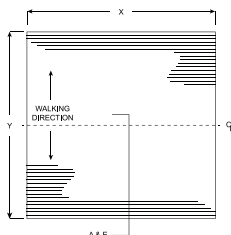
- **Nylon Carpet Inserts:** 100% Nylon 6 carpet fibers fusion bonded to a polypropylene backing.
- **Heavy Duty Carpet Inserts:** Polypropylene fibers fusion bonded to a polypropylene backing.

#### Vinyl:

- Vinyl serrated, nonslip surface with a convex design for improved drainage.

#### 1 Year Warranty

For full product warranty, please visit the website: <https://kadeeindustries.com/resources/>



### PRACTICAL AND ECONOMICAL

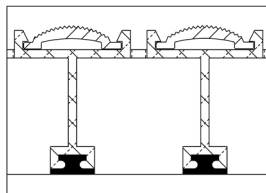
- Reduces tracked-in dirt, slush and mud.
- Drainage slots keep dirt and water away from walking surface.
- Inserts closely spaced to prevent crutch tips and canes from catching.
- Custom designs available to fit almost any application.
- Rolling load capacity - 400 pounds per wheel.

### LEED INFORMATION

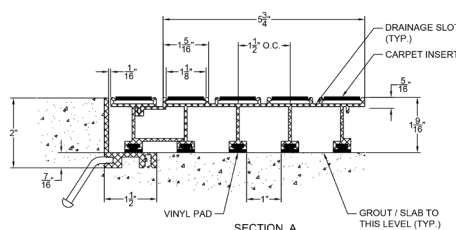
Aluminum is a unique metal: durable, flexible, lightweight, corrosion-resistant and 100% recyclable. KADEE Industries' Arc Clean Tread aluminum entrance grids are manufactured from extruded aluminum comprised of 32.5% post-consumer recycled content and 32.5% pre-consumer recycled content.

For additional information, visit <https://kadeeindustries.com/resources/>

#### Vinyl Inserts



#### KDCP Aluminum Frame Level Bed Application



#### KDCP Aluminum Frame Pit Application

