

KDCM & KDVM

MAT CLEAN TREAD™

Aluminum Roll-Out Mat with Carpet or Vinyl Inserts

HIGH QUALITY, LOW COST ALUMINUM ROLL-OUT ENTRANCE MAT SYSTEMS

APPLICATIONS

ENTRANCE MATS:

SHALLOW RECESS WITH FRAME

SURFACE MOUNTED WITH VINYL RAMP

SPECIFICATIONS

Section 12-48-13 Entrance Floor Mats

Furnish and install Mat Clean Tread™ Model KDCM or KDVM Aluminum Roll-Out Entrance Mats as manufactured by KADEE Industries in Twinsburg, Ohio.
Phone: (800) 321-3827

Construction:

- **Tread Rails:** Manufactured from 6063-T6 extruded aluminum with tread rails spaced on 1-1/2" on center. Tread rails are connected with vinyl hinges and sit on vinyl cushions with optional drainage holes.
- **Framing:** 6063-T6 Extruded aluminum. Optional tapered vinyl ramps for surface mounted units.
- **Finishes:** Standard-mill; Anodized finishes available upon request.

Carpet:

- **Nylon Carpet Inserts:** 100% Nylon 6 carpet fibers fusion bonded to a polypropylene backing.
- **Heavy Duty Carpet Inserts:** Polypropylene fibers fusion bonded to a polypropylene backing.

Vinyl:

- Vinyl serrated, nonslip surface with a convex design for improved drainage.

1 Year Warranty:

For full product warranty, please visit the website: <https://kadeeindustries.com/resources/>



THE HIGH QUALITY LOW COST ALTERNATIVE

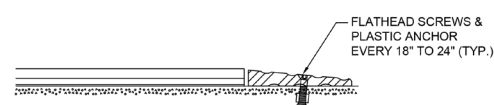
- Reduces tracked-in dirt, slush and mud.
- Ball and socket hinge design allows for easy roll-up for cleaning.
- Inserts closely spaced to prevent crutch tips and canes from catching.
- Vinyl hinges eliminate metal-to-metal rattle and corrosion lockup.
- Custom designs available to fit almost any application.
- Rolling load capacity - 350 pounds per wheel.

LEED INFORMATION

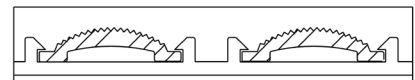
Aluminum is a unique metal: durable, flexible, lightweight, corrosion-resistant and 100% recyclable. KADEE Industries' Mat Clean Tread aluminum mats are manufactured from extruded aluminum comprised of 32.5% post-consumer recycled content.

For additional information, visit <https://kadeeindustries.com/resources/>

KDCM Vinyl Ramps



Vinyl Inserts



KDCM Aluminum Frame

