

ENTEC-58™

SSS CLEAN TREAD™

5/8" Stainless Steel Grating with Carpet Inserts

SAFE, SELF-CLEANING, STAINLESS STEEL ENTRANCE SYSTEMS

APPLICATIONS

ENTRANCE GRILLES:

LEVEL BED

SPECIFICATIONS

Section 12-48-16 Entrance Floor Grilles

Furnish and install SSS Clean Tread™ Model ENTEC-58™ Stainless Steel Grating as manufactured by KADEE Industries in Twinsburg, Ohio.

Phone: (800) 321-3827

Construction:

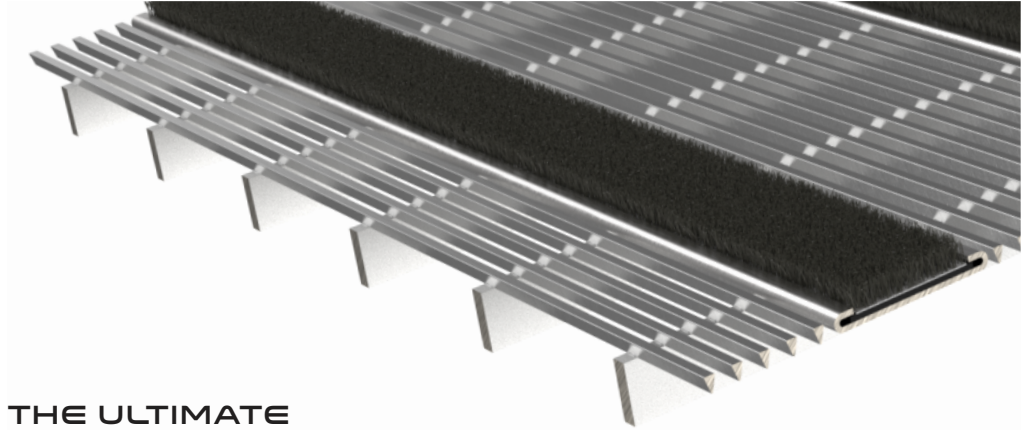
- **Tread Material:** Manufactured from type 304 stainless steel .090" x .172" surface wires spaced with a .145" slot opening and resistance welded to .125" x .500" stainless steel support rods spaced 2" on center and 1-3/8" wide x .036" formed stainless steel tread insert channels spaced 4" on center.
- **Construction:** Each juncture of surface wires to support rods shall have electric resistance welded joints. Hidden locking devices are provided to fasten grating.
- **Framing:** 6063-T6 Extruded aluminum or type 304 stainless steel.

Carpet:

- **Nylon Carpet Inserts:** 100% Nylon 6 carpet fibers fusion bonded to a polypropylene backing.
- **Heavy Duty Carpet Inserts:** Polypropylene fibers fusion bonded to a polypropylene backing.

2 Year Warranty

For full product warranty, please visit the website: <https://kadeeindustries.com/resources/>



THE ULTIMATE ENTRANCEWAY SOLUTION FOR A DISTINCTIVE AND DECORATIVE APPEARANCE

The grating is a combination of stainless steel surface wires, which create a cleaning/scraping process, along with carpet inserts spaced every 4" on center, to clean and dry shoe traffic.

- Designed for shallow recessed applications for new construction or renovation.
- Self-cleaning design reduces maintenance costs.
- Wires are evenly spaced providing safe support for wheelchairs, crutches, canes and other walking aids.
- Custom designs available to fit almost any application.

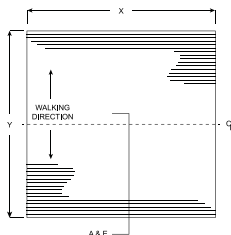
ENTEC-38 3/8" Stainless Grating

Similar to the model ENTEC-58, but at 3/8" thickness. It is an excellent alternative to aluminum or vinyl entrance mats, with a much longer life and lower maintenance. ENTEC-38 was designed as the ideal replacement or upgrade to standard aluminum roll-out mats.

LEED INFORMATION

Environmental concerns are an important consideration to specifiers making material selections for products. Stainless steel's long service life and 100% recyclability make it an excellent environmental performer. KADEE Industries' SSS Clean Tread stainless steel grating is manufactured from stainless steel comprised of 80% post-consumer recycled content and 15% pre-consumer recycled content.

For additional information, visit <https://kadeeindustries.com/resources/>



ENTEC-58 SS Grating SS Frame

