

ENTEC-58™

SSS CLEAN TREAD™

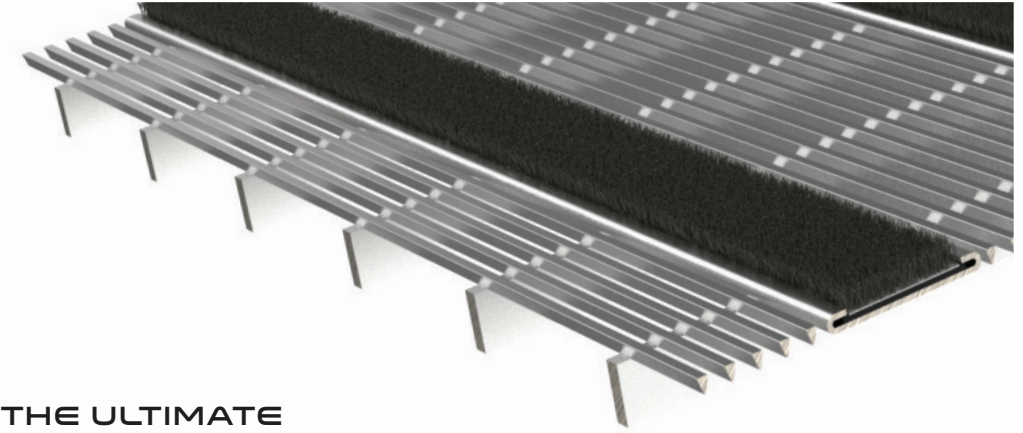
5/8" Stainless Steel Grating with Carpet Inserts

SAFE, SELF-CLEANING, STAINLESS STEEL ENTRANCE SYSTEMS

APPLICATIONS

ENTRANCE GRILLES:

LEVEL BED APPLICATIONS



SPECIFICATIONS

Section 12 48 16 Entrance Floor Grilles

Furnish and install SSS Clean Tread Model ENTECTM-58 Stainless Steel Grating as manufactured by Kadee Industries, Twinsburg, Ohio.

Phone: (800) 321-3827

Construction:

- **Tread Material:** Manufactured from Type 304 Stainless Steel .090" x .172" surface wires spaced with a .145" slot opening and resistance welded to .125" x .500" stainless steel support rods spaced 2" on center and 1-3/8" wide x .036" formed stainless steel tread insert channels spaced 4" on center.
- **Construction:** Each juncture of surface wires to support rods shall have electric resistance welded joints. Hidden locking devices are provided to fasten grating.
- **Framing:** 6063-6 Extruded Aluminum or Type 304 stainless steel.

Carpet:

- **Nylon Carpet Inserts:** 100% Nylon 6 carpet fibers fusion bonded to a polypropylene backing.
- **Heavy Duty Carpet Inserts:** Polypropylene fibers fusion bonded to a polypropylene backing.

5 Year Warranty

For full product warranty, please visit the website: <https://kadeeindustries.com/resources/>

THE ULTIMATE ENTRANCEWAY SOLUTION FOR A DISTINCTIVE AND DECORATIVE APPEARANCE

The grating is a combination of stainless steel surface wires, which create a cleaning/scraping process, along with carpet inserts spaced every 4" on center, to clean and dry shoe traffic.

- Designed for shallow recessed applications for new construction or renovation.
- Self-cleaning design reduces regular maintenance costs.
- Wires are evenly spaced providing safe support for high heels, wheelchairs, crutches, canes and other walking aids.
- Custom designs available to fit almost any application.

ENTEC-38 3/8" Stainless Grating

Similar to the model ENTEC-58, but at 3/8" thickness. Excellent alternative to aluminum or vinyl entrance mats, with a much longer life and lower maintenance. ENTEC-38 was designed as an ideal replacement or upgrade to standard aluminum roll-out mats.

LEED INFORMATION

Environmental concerns are an important consideration to specifiers making material selections for products. Stainless steel's long service life and 100 percent recyclability make it an excellent environmental performer. Kadee Industries' S Clean Tread Stainless Steel Grating is manufactured from stainless steel comprised of 80% post consumer recycled content and 15% pre-consumer recycled content.

For additional information, visit <https://kadeeindustries.com/resources/>

Entec-58 SS Grating SS Frame

