

DRAWN BY : XXX

DATE : XX/XX/XX

JOB NO : XXXXX

SHEET X OF X

PROJECT : XXXXXXXX

VM VINYL RAMPS SURFACE APP

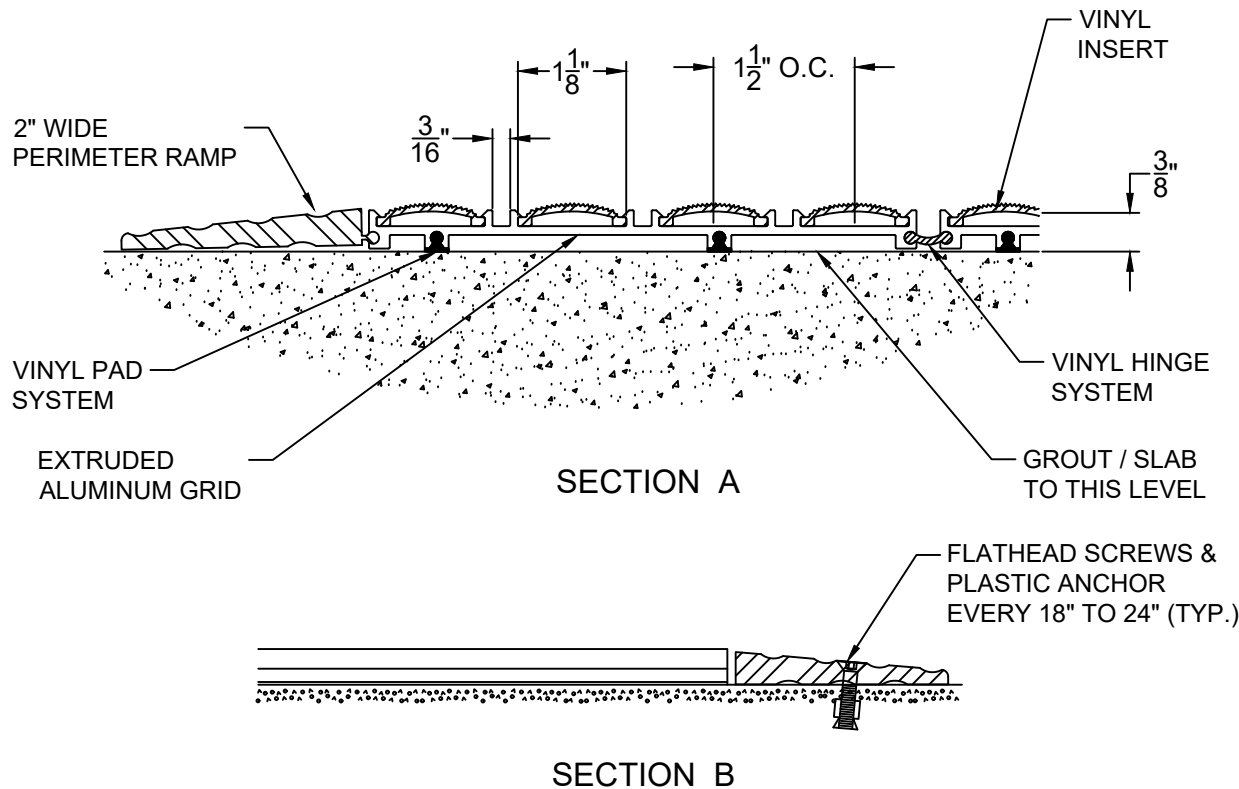
MODEL : KDVM ALUM ROLLOUT MAT W/ VINYL INSERTS, PERIMETER RAMP
- SURFACE APPLICATION



8333 BOYLE PARKWAY TWINSBURG, OHIO 44087
(800) 321-3827 TEL (440) 439-8650 FAX (440) 439-6889

STANDARD SPECIFICATIONS : KDVM

1. MAT SURFACE : VINYL TREADS ARE MADE OF PVC, SERRATED, NON-SLIP SURFACE WITH A CONVEX DESIGN.
2. MAT MATERIAL : EXTRUDED ALUMINUM (ALLOY 6063-T6)
3. FRAMES : EXTRUDED BLACK VINYL
4. FILLER (AS REQUIRED) : EXTRUDED BLACK VINYL
5. MANUFACTURING TOLERANCES :
 WIDTH : + 0" / - 0.125"
 WALKING DIRECTION : + 1" / - 1"



NOTE :

FRAME FINISH : BLACK VINYL

GRID FINISH : MILL

VINYL COLOR :