

DRAWN BY : XXX

DATE : XX/XX/XX

JOB NO : XXXXX

SHEET 1 OF X

PROJECT : XXXXXXXX

ALI ALUM ANGLE LEVEL BED STD

MODEL : KDALi ALUM BAR GRATING W/ HIDDEN LOCKING DEVICES, ALUM ANGLE FRAME - LEVEL BED APPLICATION

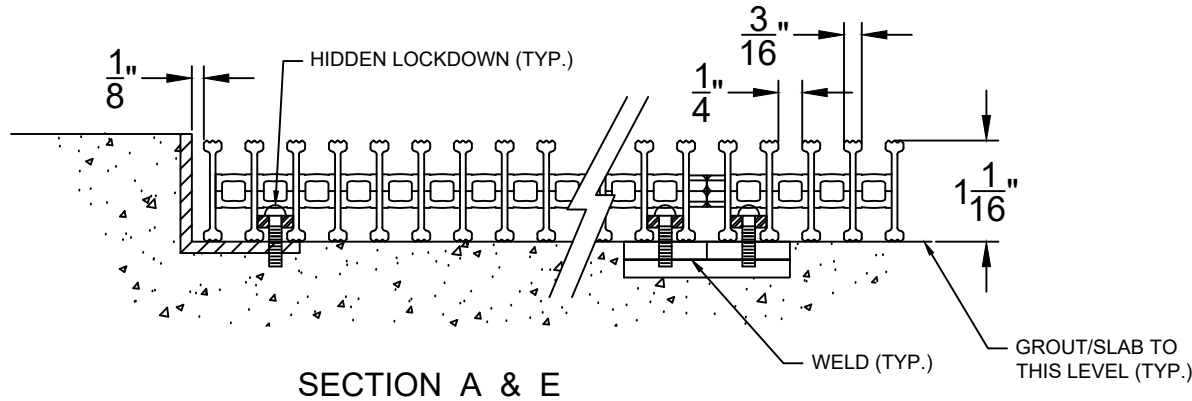


8333 BOYLE PARKWAY TWINSBURG, OHIO 44087  
(800) 321-3827 TEL (440) 439-8650 FAX (440) 439-6889

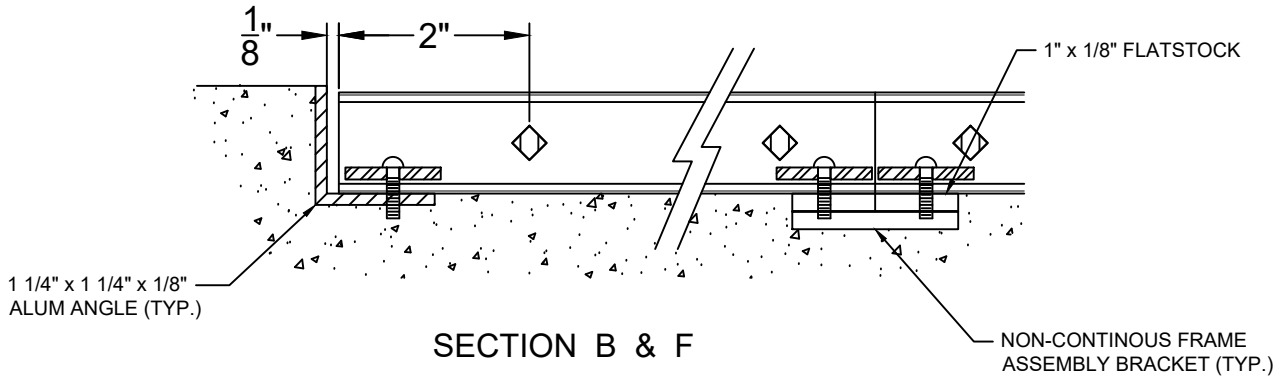
GENERAL SPECIFICATIONS : KDALi

CONSTRUCTION :

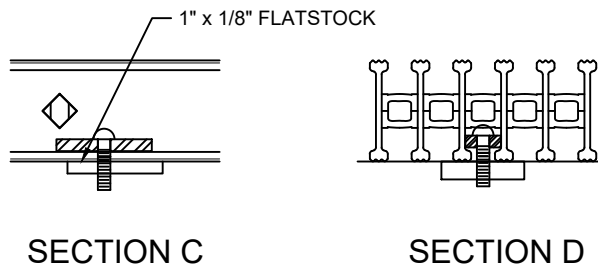
1. THE TREAD MATERIAL SHALL BE OF MILL FINISH EXTRUDED ALUMINUM ALLOY (6063-T6) WITH 1.06" x 0.186" ALUMINUM TREAD BARS
2. SWAGED ALUMINUM CROSS BAR FROM EXTRUDED ALUMINUM ALLOY (6063-T1). STANDARD SLOT OPENING SHALL BE  $\frac{1}{4}$ ".
4. HIDDEN LOCKING DEVICES WILL FASTEN GRATING TO THE FRAME. HIDDEN LOCKDOWNS SHALL BE SPACED NO GREATER THEN 2'0" ON CENTER
5. FRAMES : EXTRUDED ALUMINUM (ALLOY 6063-T6)
6. MANUFACTURING TOLERANCES :  
GRATE : + 0" / - 0.250"  
FRAME : + 0" / - 0.125"



SECTION A & E



SECTION B & F



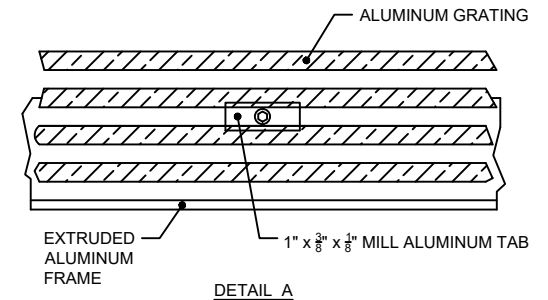
SECTION C

SECTION D

NOTE :

GRATE : MILL FINISH

FRAME : MILL FINISH



DETAIL A

GRATES SHOULD BE OVERALL  $\frac{1}{4}$ " (NOMINAL) SMALLER THAN RECESS INSIDE DIMENSION. CUSTOMER RESPONSIBLE FOR PROPER SUPPORT AT LEAST EVERY 2'.