

DRAWN BY : XXX

DATE : XX/XX/XX

JOB NO : XXXXX

SHEET XX OF XX

PROJECT : XXXXXXXX

ENTEC 58 SS FRAME

MODEL : ENTEC-58 SS GRATING W/ CARPET INSERTS, HIDDEN LOCKING DEVICES, SS FRAME

MODEL : ENTEC-58 SS GRATING W/ HEAVY-DUTY CARPET INSERTS, HIDDEN LOCKING DEVICES, SS FRAME



8333 BOYLE PARKWAY TWINSBURG, OHIO 44087  
(800) 321-3827 TEL (440) 439-8650 FAX (440) 439-6889

GENERAL SPECIFICATIONS : ENTEC-58

MAT INSERT :

NYLON CARPET : 100% NYLON 6, FUSION BONDED TO POLYPROPYLENE BACKING.

HEAVY DUTY CARPET : 100% POLYPROPYLENE FIBERS (80/20 BLEND OF 600/12 DENIER MULTIFILAMENT AND 595 DENIER MONOFILAMENT) FUSION BONDED TO POLYPROPYLENE BACKING

TREAD MATERIAL : TYPE 304 SS WIRE #4 SATIN FINISH

SUPPORT RODS : 0.125" x 0.5" SPACED 2" O.C.

SLOT OPENINGS : 0.145"  
EACH JUNCTURE OF SURFACE WIRES TO SUPPORT RODS SHALL HAVE WELDED JOINTS

OVERALL DIMENSION TOLERANCES :  
GRATING : + 0", - 0.125", FRAME : + 0", - 0.125"

MANUFACTURING TOLERANCES :  
ANSI/NAAMM A202.1-MBG 531

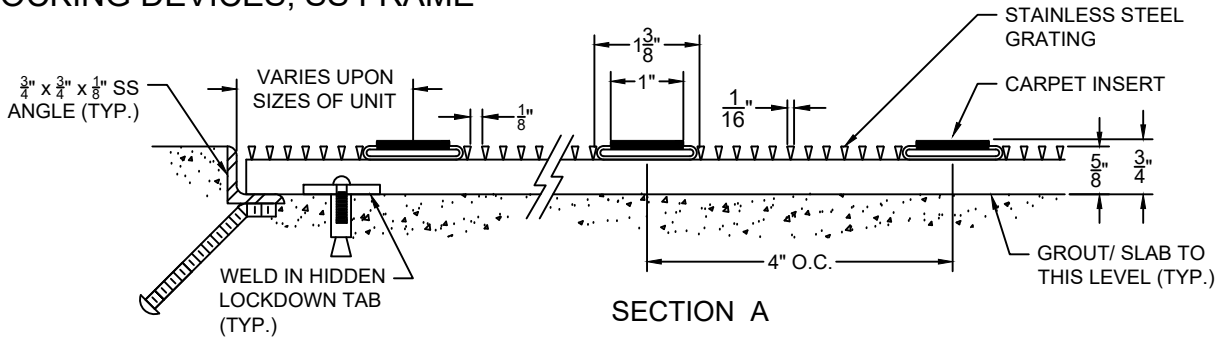
MATERIAL TOLERANCES :  
ASTM A484/A484M APPLICABLE TO SS ANGLES  
ASTM B221 APPLICABLE TO ALUM SHAPES

SPECIAL NOTES :  
\* GC/INSTALLER IS RESPONSIBLE FOR COPLANAR INSTALLATION OF MAT SURFACE TO SURROUNDING FLOOR CONDITIONS.

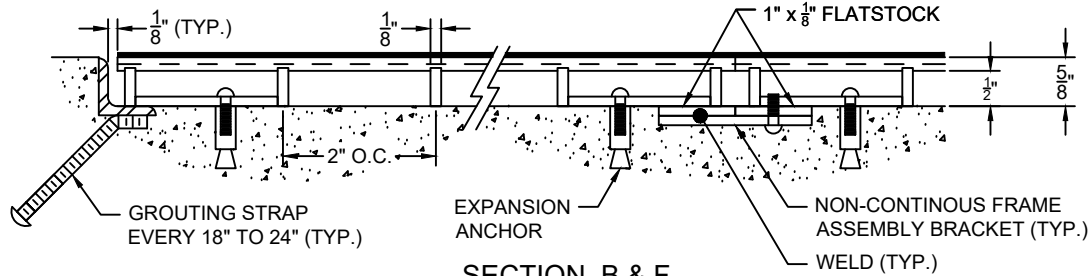
INSERT TRACK : TYPE 304 SS 1 3/8" CHANNEL SPACED 4" O.C..

NOTE :

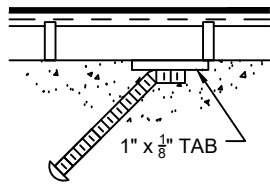
CARPET COLOR :



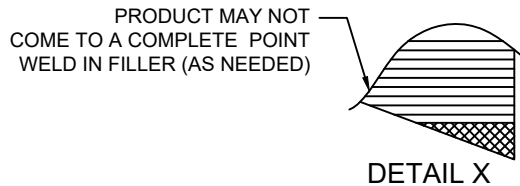
SECTION A



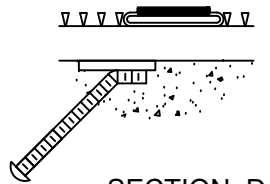
SECTION B & F



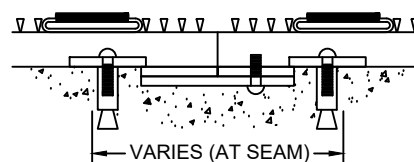
SECTION C



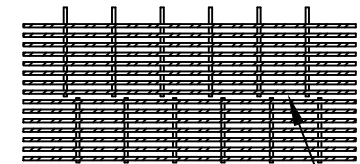
DETAIL X



SECTION D



SECTION E



DETAIL A

HIDDEN LOCKDOWNS ARE LOCATED AT STARS (\*\*S) ON GRATING. USE ALL LOCKDOWNS PROVIDED.  
SEAMS IN GRATING MAY NOT ALIGN WITH SEAMS IN FRAMING IN ALL CASES.  
NOTE : ENTEC-58 IS DESIGNED TO REST DIRECTLY ON THE RECESS FLOOR (IT WILL NOT SPAN).

NOTE : DO NOT SCALE DRAWING.

ENTEC 58 5/17/17