

DRAWN BY : XXX

DATE : XX/XX/XX

JOB NO : XXXXX

SHEET X OF X

PROJECT : XXXXXXXXXXXXXXXX ENTEC 58 ALUM FRAME STD

MODEL : ENTEC-58 SS GRATING W/ CARPET INSERTS, HIDDEN LOCKING DEVICES, EMBEDDED ALUMINUM FRAME; FRAMES ARE NOT WELDED

KADEE INDUSTRIES, INC.

7160 KRICK ROAD WALTON HILLS, OHIO 44146
(800) 321-3827 TEL (440) 439-8650 FAX (440) 439-6889

GENERAL SPECIFICATIONS : ENTEC-58

MAT INSERT :

NYLON CARPET : 100% NYLON 6, FUSION BONDED TO POLYPROPYLENE BACKING.

HEAVY DUTY CARPET : 100% POLYPROPYLENE FIBERS (80/20 BLEND OF 600/12 DENIER MULTIFILAMENT AND 595 DENIER MONOFILAMENT) FUSION BONDED TO POLYPROPYLENE BACKING

TREAD MATERIAL : TYPE 304 SS WIRE #4 SATIN FINISH

SUPPORT RODS : 0.125" x 0.5" SPACED 2" O.C.

SLOT OPENINGS : 0.145"
EACH JUNCTURE OF SURFACE WIRES TO SUPPORT RODS SHALL HAVE WELDED JOINTS

OVERALL DIMENSION TOLERANCES :
GRATING : + 0", - 0.125", FRAME : + 0", - 0.125"

MANUFACTURING TOLERANCES :
ANSI/NAAMM A202.1-MBG 531

MATERIAL TOLERANCES :
ASTM A484/A484M APPLICABLE TO SS ANGLES
ASTM B221 APPLICABLE TO ALUM SHAPES

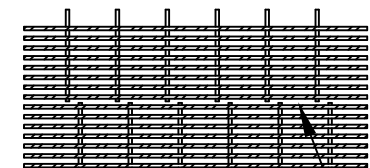
SPECIAL NOTES :
* GC/INSTALLER IS RESPONSIBLE FOR COPLANAR INSTALLATION OF MAT SURFACE TO SURROUNDING FLOOR CONDITIONS.

INSERT TRACK : TYPE 304 SS 1 3/8" CHANNEL SPACED 4" O.C..

NOTE :

FRAME FINISH : MILL

CARPET COLOR :

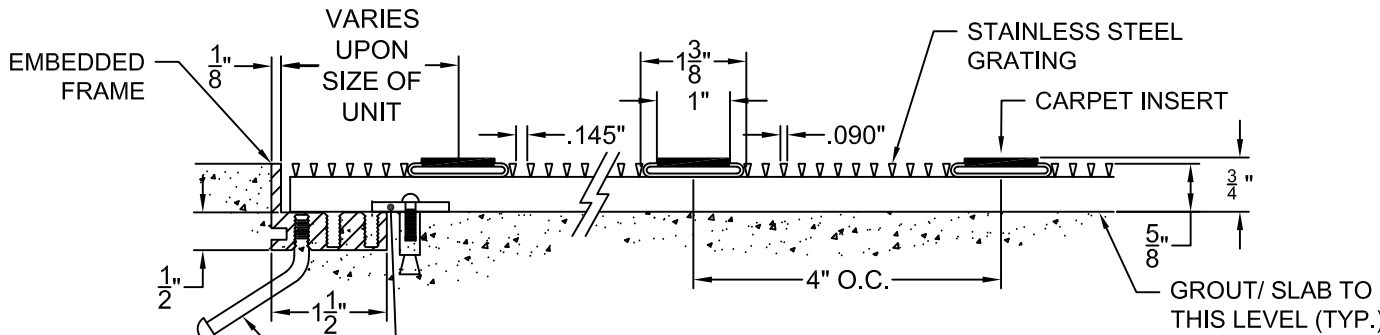


SUPPORT RODS MAY NOT ALIGN

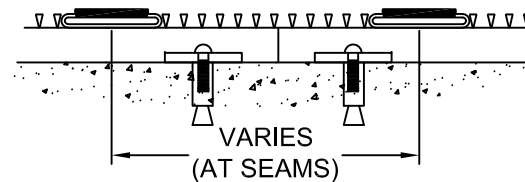
DETAIL A

NOTE : DO NOT SCALE DRAWING.

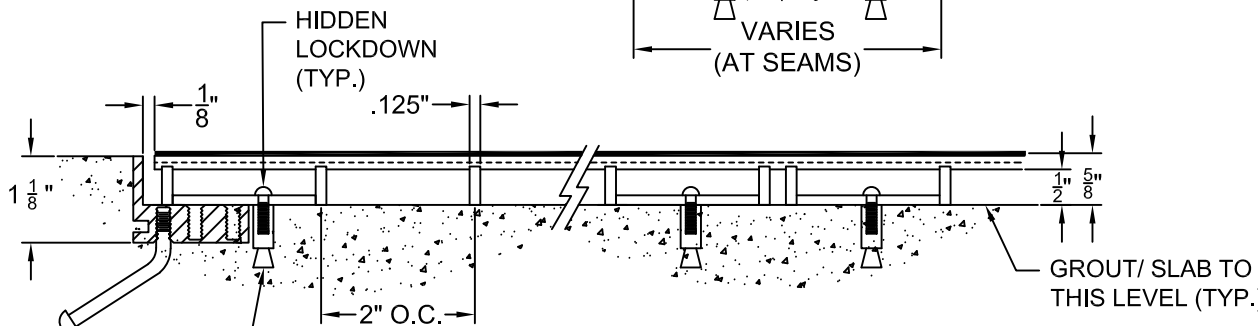
ENTECS 58 5/17/17



SECTION A

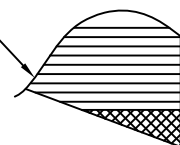


EMBEDDED FRAME
1/8"
VARIES UPON SIZE OF UNIT
1 3/8"
1"
.145"
.090"
3/4"
5/8"
4" O.C.
GROUT/ SLAB TO THIS LEVEL (TYP.)
1/2"
1 1/2"
GROUTING STRAP CUSTOMER INSTALLED EVERY 18" TO 24" (TYP.)
WELD IN HIDDEN LOCKDOWN TAB (TYP.)



SECTION B

PRODUCT MAY NOT COME TO A COMPLETE POINT WELD IN FILLER (AS NEEDED)



DETAIL X

HIDDEN LOCKDOWNS ARE LOCATED AT STARS (*S) ON GRATING. USE ALL LOCKDOWNS PROVIDED. SEAMS IN GRATING MAY NOT ALIGN WITH SEAMS IN FRAMING IN ALL CASES.
NOTE : ENTEC-58 IS DESIGNED TO REST DIRECTLY ON THE RECESS FLOOR (IT WILL NOT SPAN).