

DRAWN BY:

DATE:

JOB NO:

SHEET OF

KADEE INDUSTRIES, INC.

7160 KRICK ROAD □ WALTON HILLS, OHIO 44146 (800) 321-3827 □ TEL (440) 439-8650 □ FAX (440) 439-6889

PROJECT:

MODEL: KD58 SS Grating w/Hidden Locking Devices, SS Frame - LEVEL BED APPLICATION
FRAMES AND PIT LINERS ARE NOT WELDED

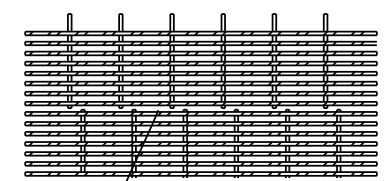
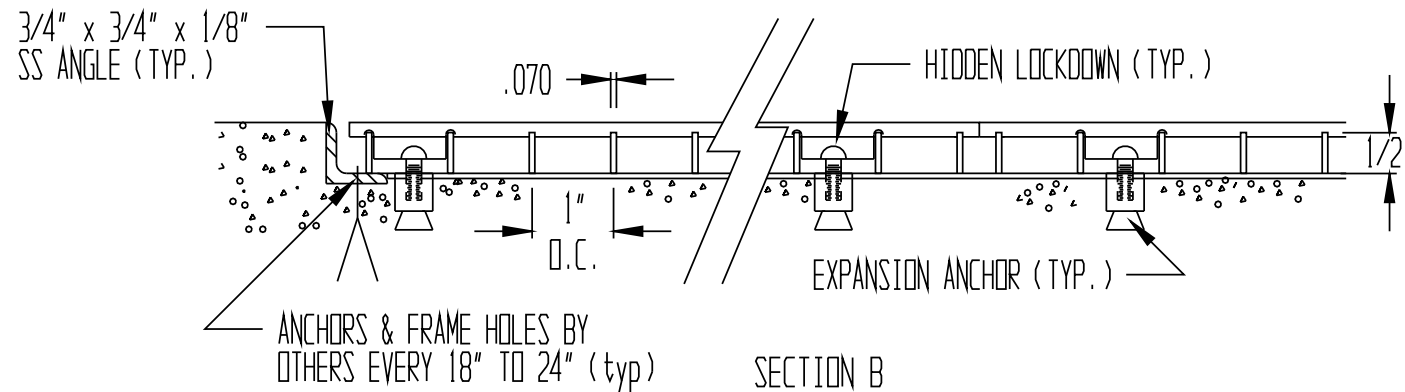
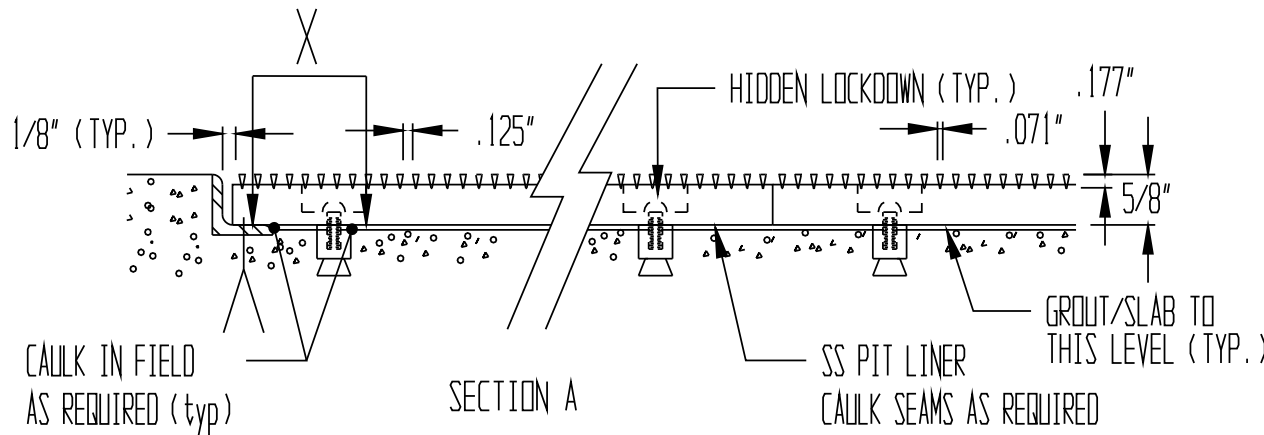
- 1) ASSEMBLE FRAMES IN FIELD
- 2) PREPARE PIT FOR COPLANAR INSTALLATION OF PIT LINER (detail X)

GENERAL SPECIFICATIONS: KD58

TREAD MATERIAL: TYPE 304 SS .071" x .177"
 #4 SATIN FINISH SPACED .125"; SPACING +/- .005.
 SUPPORT RODS: .070" x .5" SPACED 1" O.C.
 CONSTRUCTION: EACH JUNCTURE OF SURFACE WIRES TO SUPPORT RODS SHALL HAVE ELECTRIC RESISTANCE WELDED JOINTS.
 OVERALL DIMENSION TOLERANCES:
 GRATING: +0, -.125" , FRAME: +0, -.125"
 MANUFACTURING TOLERANCES:
 ANSI/NAAMM A202.1-MBG 531 APPLICABLE TO:
 ON CENTER MEASUREMENT OF TREAD MATERIAL
 DIAGONAL MEASUREMENTS (SQUARE)
 TRANSVERSE BOW (BEFORE FASTENING)
 LONGITUDINAL BOW (BEFORE FASTENING)
 MATERIAL TOLERANCES:
 ASTM A484/A484M APPLICABLE TO SS ANGLES
 ASTM B221 APPLICABLE TO ALUM SHAPES

SPECIAL NOTES:

- * GC/INSTALLER IS RESPONSIBLE FOR COPLANAR INSTALLATION OF MAT SURFACE TO SURROUNDING FLOOR CONDITIONS
- * GIVEN THAT THE NUMBER OF SURFACE WIRES (TREAD MATERIAL) IN ONE FOOT IS ABOUT SIXTY, IT IS PROBABLE THAT ADJACENT PANELS' WIRES WILL NOT ALIGN IN EVERY CASE. IN MOST CASES, THE WIRES WILL ALIGN FOR SEVERAL INCHES THEN APPEAR TO WALK. THIS IS AN UNAVOIDABLE MANIFESTATION OF THE MANUFACTURING PROCESS. THIS CONDITION APPLIES TO THE SUPPORT RODS AS WELL. SIMILARLY IN MITERED CORNERS, THE VARIANCES OF SLOTS WITHIN THE NORMAL TOLERANCE RANGES PRECLUDES GUARANTEED ADJACENT PANEL WIRE ALIGNMENT.



DETAIL A: SUPPORT RODS MAY NOT ALIGN

HIDDEN LOCKDOWNS ARE LOCATED AT STARS (*) ON GRATING. USE ALL LOCKDOWNS PROVIDED.
 PIT LINERS ARE CUSTOM CUT TO FIT; TOLERANCE OF +0 / -1/8"
 KD58 MUST REST DIRECTLY ON THE RECESS FLOOR (IT WILL NOT SPAN).