

DRAWN BY:

DATE:

JOB NO:

SHEET OF

KADEE INDUSTRIES, INC.

7160 KRICK ROAD □ WALTON HILLS, OHIO 44146
(800) 321-3827 □ TEL (440) 439-8650 □ FAX (440) 439-6889

PROJECT:

MODEL: KD38 SS Grating w/Hidden Locking Devices, Embedded Alum Frame - LEVEL BED APPLICATION
STANDARD MILL FRAME

GENERAL SPECIFICATIONS: KD38

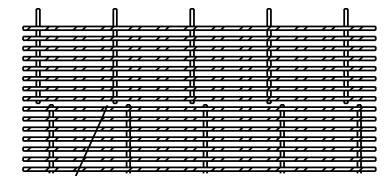
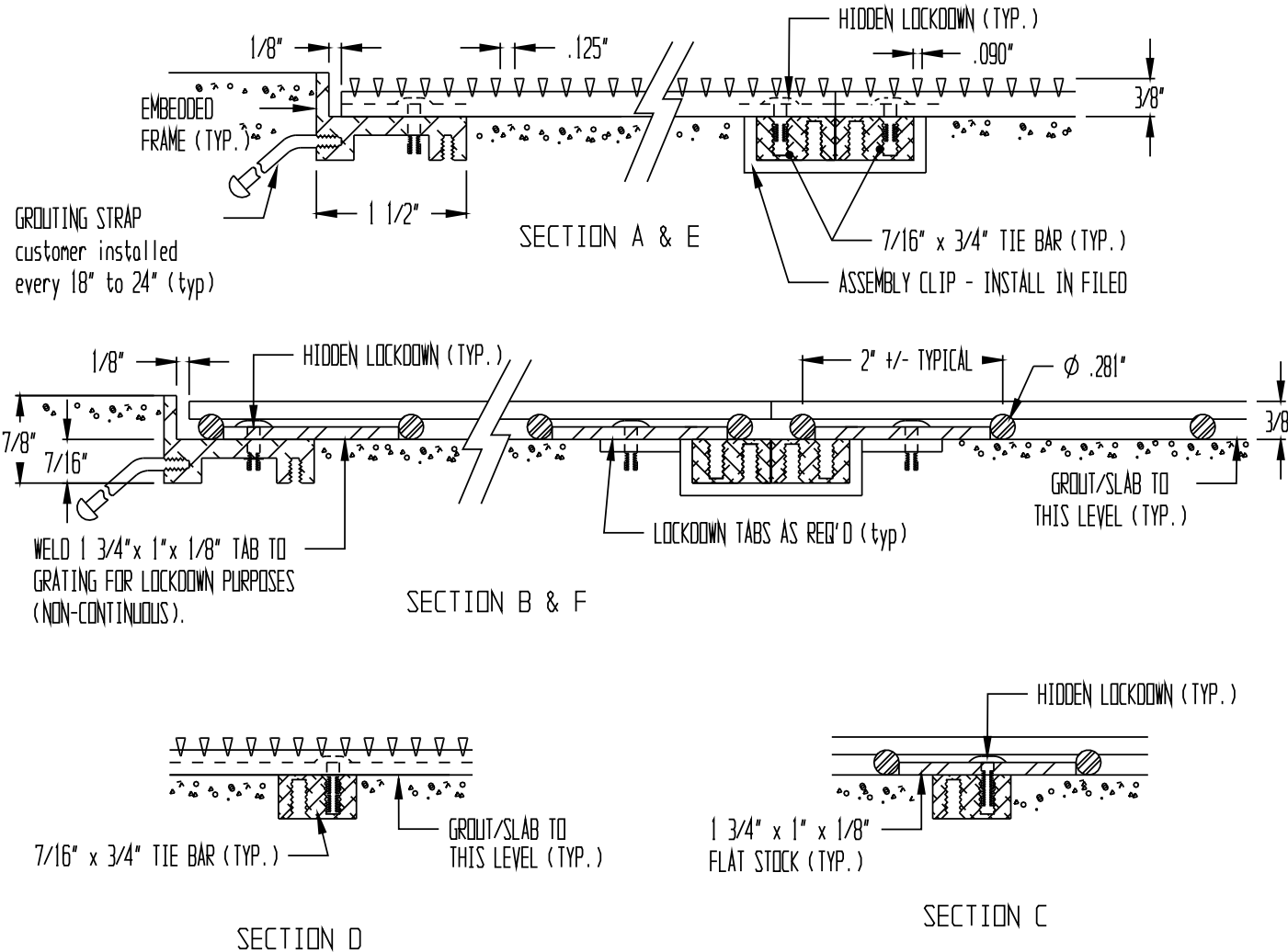
TREAD MATERIAL: TYPE 304 SS .090" x .138"
#4 SATIN FINISH SPACED .125"; SPACING +/- .005.
SUPPORT RODS: 0.281" dia. SPACED 2" O.C.
CONSTRUCTION: EACH JUNCTURE OF SURFACE WIRES TO SUPPORT RODS SHALL HAVE ELECTRIC RESISTANCE WELDED JOINTS.

OVERALL DIMENSION TOLERANCES:
GRATING: +0, -.125" , FRAME: +0, -.125"

MANUFACTURING TOLERANCES:
ANSI/NAAMM A202.1-MBG 531 APPLICABLE TO:
ON CENTER MEASUREMENT OF TREAD MATERIAL
DIAGONAL MEASUREMENTS (SQUARE)
TRANSVERSE BOW (BEFORE FASTENING)
LONGITUDINAL BOW (BEFORE FASTENING)

MATERIAL TOLERANCES:
ASTM A484/A484M APPLICABLE TO SS ANGLES
ASTM B221 APPLICABLE TO ALUM SHAPES

SPECIAL NOTES:
* GC/INSTALLER IS RESPONSIBLE FOR COPLANAR INSTALLATION OF MAT SURFACE TO SURROUNDING FLOOR CONDITIONS
* GIVEN THAT THE NUMBER OF SURFACE WIRES (TREAD MATERIAL) IN ONE FOOT IS ABOUT SIXTY, IT IS PROBABLE THAT ADJACENT PANELS' WIRES WILL NOT ALIGN IN EVERY CASE. IN MOST CASES, THE WIRES WILL ALIGN FOR SEVERAL INCHES THEN APPEAR TO WALK. THIS IS AN UNAVOIDABLE MANIFESTATION OF THE MANUFACTURING PROCESS. THIS CONDITION APPLIES TO THE SUPPORT RODS AS WELL. SIMILARLY IN MITERED CORNERS, THE VARIANCES OF SLOTS WITHIN THE NORMAL TOLERANCE RANGES PRECLUDES GUARANTEED ADJACENT PANEL WIRE ALIGNMENT.



DETAIL A: SUPPORT RODS MAY NOT ALIGN

/drawings/38al.pdf

NOTE: KD38 IS DESIGNED TO REST DIRECTLY ON THE RECESS FLOOR. (IT DOES NOT SPAN)